

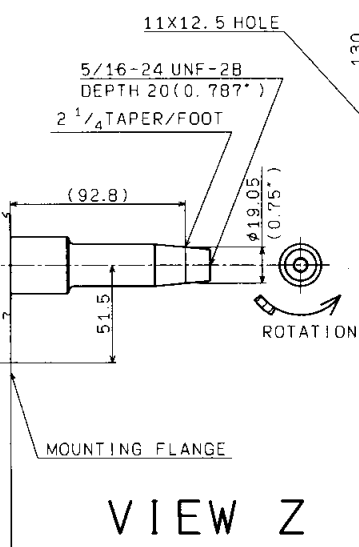
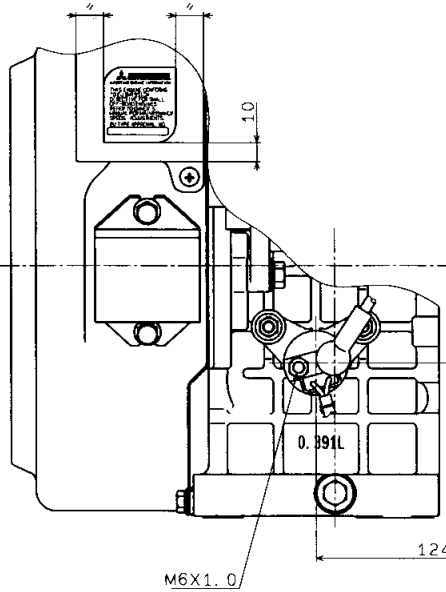
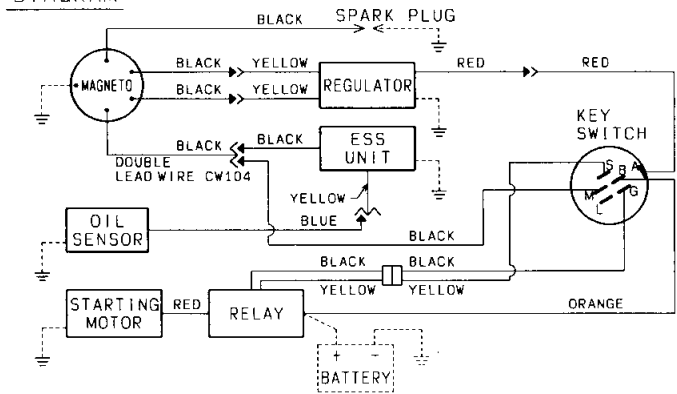
NOTE

DIMENSIONS SHOWN WITHOUT ALLOWANCE ARE NOMINAL AND ARE SUBJECT TO PRODUCTION TOLERANCE.

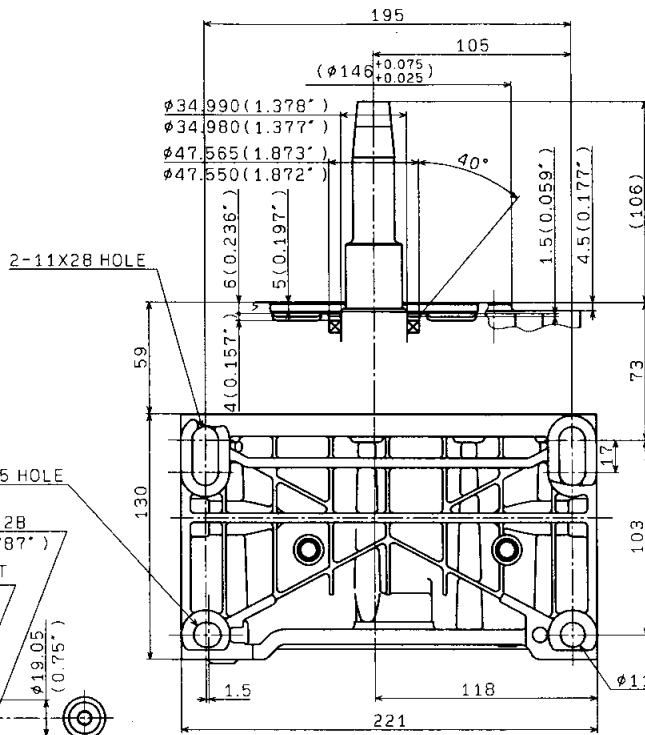
Specifications

Type	Air-Cooled 4 Stroke Cycle OHV Gasoline Engine with Slant Cylinder
Bore X Stroke (mm)	89X63
Displacement (cm³)	391
Continuous Rated Output (kW/rpm)	6.6/3600 (9.0/3600)
Maximum Output (kW)	9.5 (13.0)
Maximum Torque (N-m/rpm)	26.5/2800 (2.70/2800)
Fuel	Unleaded Automobile Gasoline
Fuel Tank Capacity (L)	
Lubricating Oil	Engine Oil SE Class or Higher
Lubricating Oil Capacity (L)	1.0
Starting System	Recoil Starter / Electric Starter
Ignition System	Breakerless Ignition Type, Flywheel Magneto
Air Cleaner	Polyurethane Type
Governor System	All Speed Mechanical Governor
PTO Shaft Rotation Facing PTO	Counter-Clockwise
Charge Capacity (V-A)	12-10

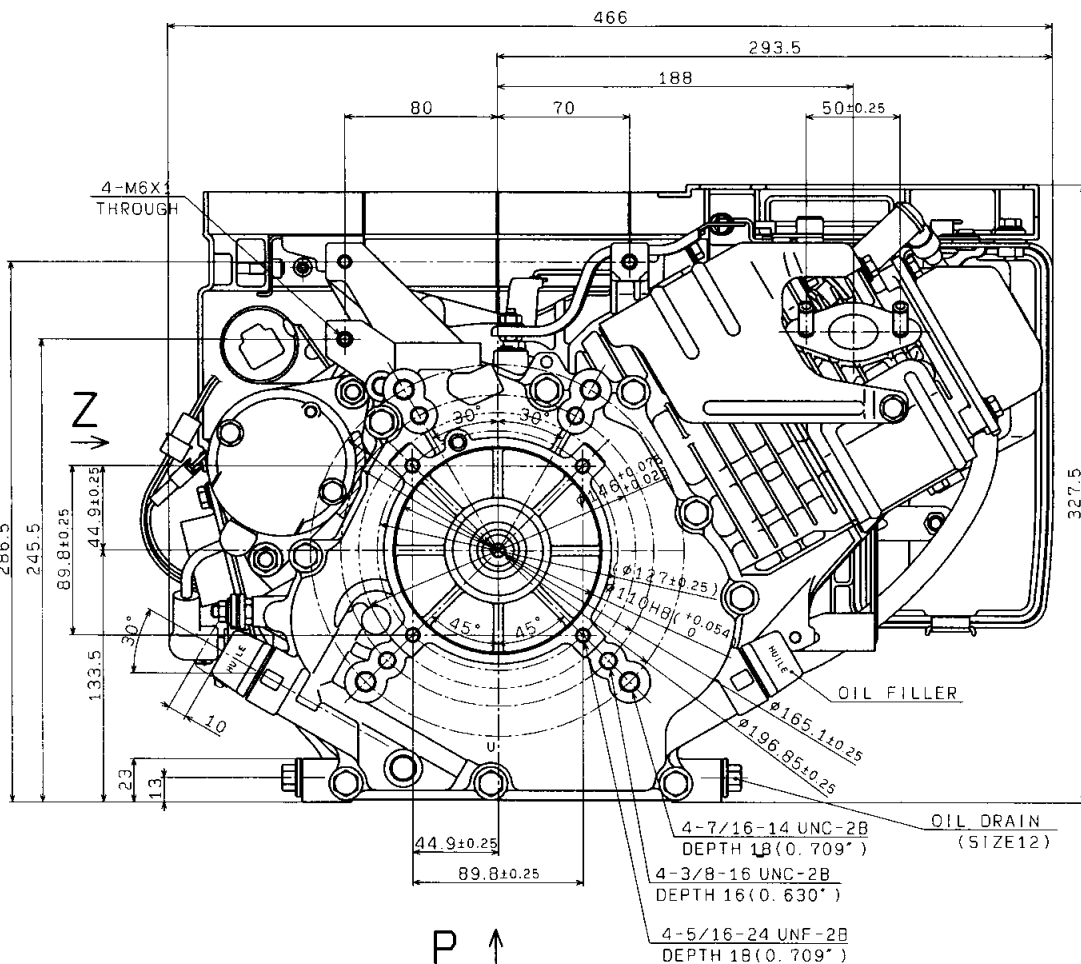
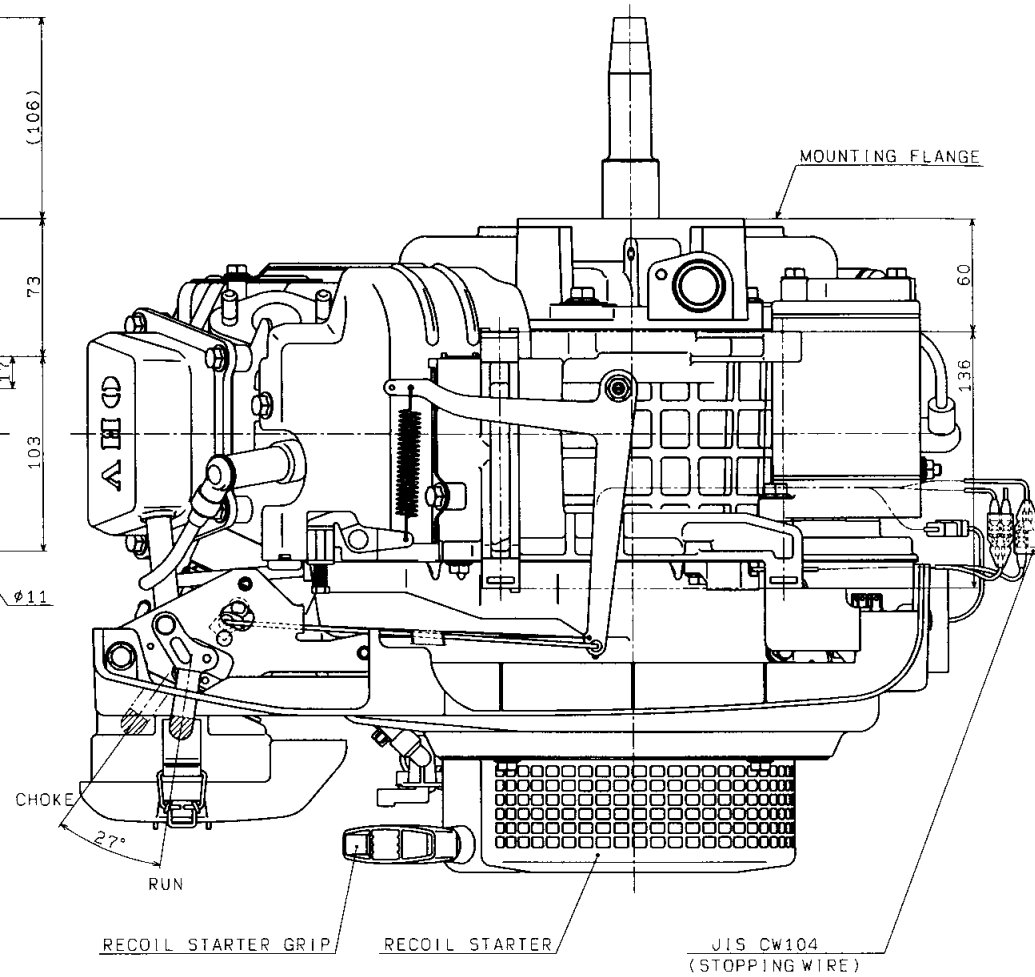
DIAGRAM



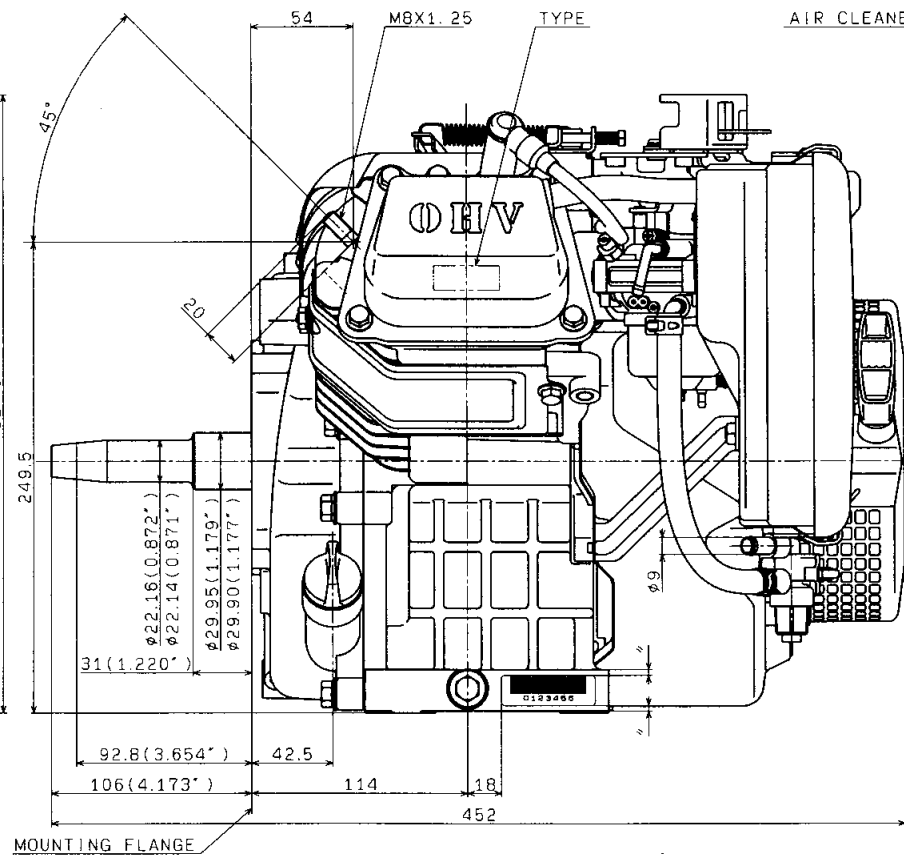
VIEW Z



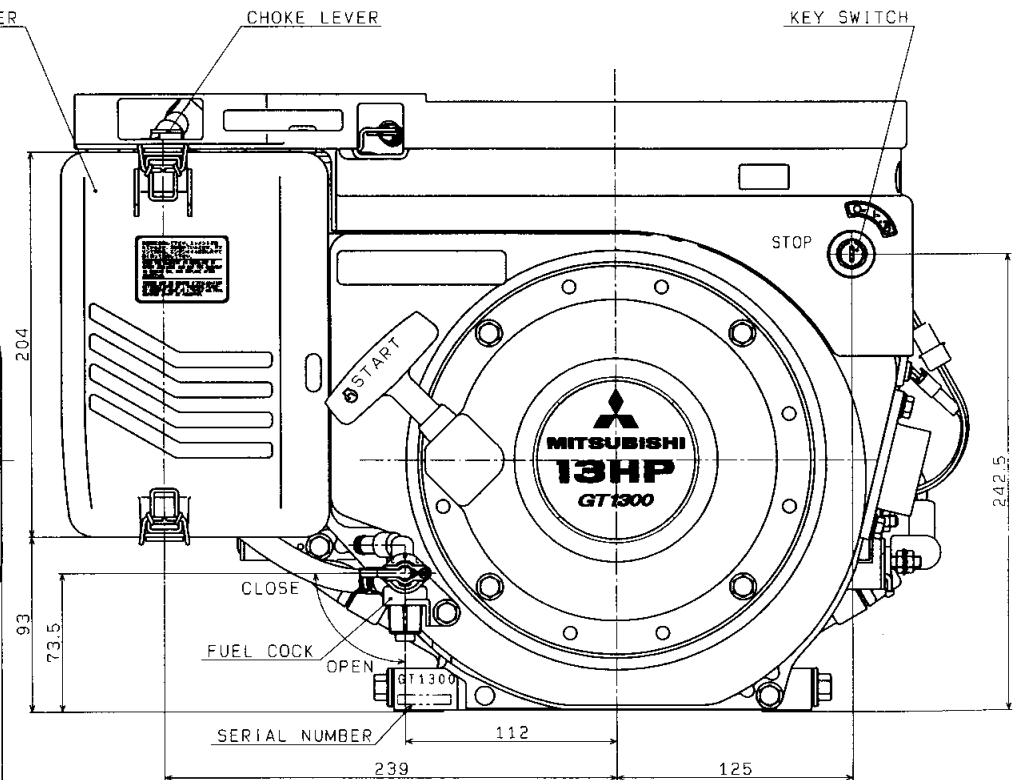
VIEW P



P ↑



MOUNTING FLANGE



GT1300		機関裝備圖	
ENGINE INSTALLATION		GT1300PEGSZ	
三菱重工業株式会社汎用機・特車事業本部 (東京) 図番		GT1300PEGSZ	